

INTRO TO DATA IN EXCEL

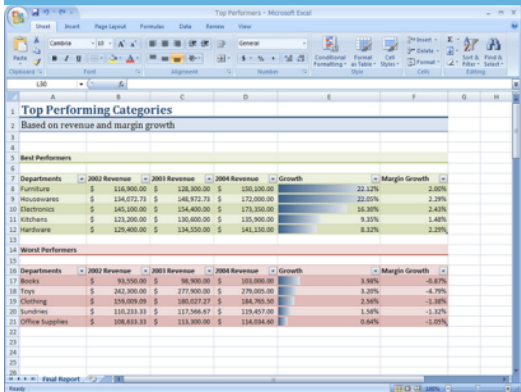
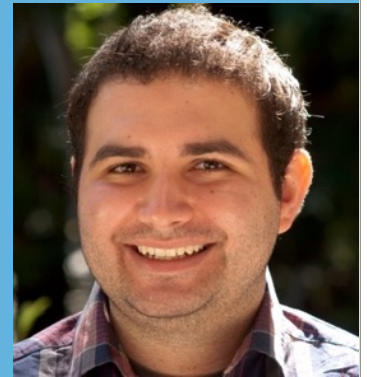
May 28, 3:00-4:30pm

Room 121, Social Sciences 2

with Jeff Warshaw

PhD Student in Cognitive Psychology

UC Santa Cruz



	A	B	C
1	Variable name (one word ONLY)	Format name (if any)	Variable label
2	patkey		Patient identifier
3	age		Age at diagnosis
4	ethorig	ethorig	Ethnic origin
5	famfx	yesno	Family history
6	gender	gender	Patient gender
7	smoker	yesno	Patient is currently smoking
8	SmokingDuration		Number of years patient has been smoking
9	ESASVomiting		Vomiting (Edmonton Symptom Assessment Scale)
10	ESASSleep		Sleep (Edmonton Symptom Assessment Scale)
11	sf_mtha	sf_mth	sf_mtha
12	sf_mthb	sf_mth	sf_mthb
13	sf_mthc	sf_mth	sf_mthc
14	sf_mthd	sf_mth	sf_mthd
15	sf_mthe	sf_mth	sf_mthe
16	sf_mthf	sf_mth	sf_mthf
17	sf_mthg	sf_mth	sf_mthg
18	sf_mthh	sf_mth	sf_mthh
19	sf_mthi	sf_mth	sf_mthi
20	sf_mthj	sf_mth	sf_mthj

Data analysis is an increasingly valuable skill. It can get you an RA position, a job, or into grad school, but how do you get started?

The UCSC Center for Statistical Analysis in the Social Sciences offers this introductory workshop for students who want to learn the basics of working with data in Microsoft Excel. This hands-on workshop is focused on teaching you the skills you need to get started entering data, preparing it for analysis, and answering simple research questions to gain confidence in working with data. We will cover best practices for managing datasets you're working with, and online repositories where you can find data to practice with on your own.

Topics we will cover include:

- Dataset formatting
- Entering your data
- Making a codebook
- Descriptive statistics
- Basic data visualization
- Online resources
- Exporting data to other statistical programs

No prior experience required, but bringing a device with Microsoft Excel already installed (free for all UCSC students here!) will let you try things out as we go. We look forward to seeing you at this workshop!

CENTER FOR STATISTICAL ANALYSIS
IN THE SOCIAL SCIENCES

<http://csass.ucsc.edu>

Questions? Please email jwarshaw@ucsc.edu